



Options

windows, doors & conservatories



Beauty beyond good looks



Did you know the first 'A' rated window in the UK was a VEKA window?
Find out how your installation company can transform your home using
VEKA's energy efficient window and door systems.

The Art of Light

It only takes a glance to see what the beauty of sparkling new PVC-U windows, doors and conservatories can do for your home

But look beyond the surface and you will find a level of technical performance that has made the VEKA frame system the premier choice for some of the UK's largest and most prestigious architectural projects as well as literally millions of homes, from the smallest to the most grand.

Windows 4 - 11

Casement	6 - 7
Vertical Slider	8 - 9
Tilt & Turn	10
Fully Reversible	11

Doors 12 - 19

PVC Doors	13
French Doors	14
Patio Doors	15
Bi-fold Doors	16 - 17
Composite Doors	18 - 19

Conservatories 20 - 21

Colour options 22 - 23



For your peace of mind.....

The VEKA Group was established in 1969 and is still family owned to this day. During all that time the ethos of the company has been focused on continued product development, ensuring that our window and door systems offer you the very best in performance and style. From bevelled to sculptured windows, PVC-U to composite doors – all our products will not only enhance the appearance of your home, but their energy efficiency will ensure it is a warm and secure place to live.

Quality windows needn't cost the Earth

In fact, VEKA takes the Earth and its protection very seriously – that's why it was the first window systems company to establish a PVC-U recycling plant.

Windows

A wide range
of window styles
are available...

...allowing you to complement and enhance your home whilst also improving the level of security and warmth.

Whether you live in a period property or one from more recent times, there is a window to meet your needs and of course suit your personal taste – it's your home; make it as unique as you are. Complement a period property with Vertical Sliders or add the wow factor to a contemporary home with coloured windows – the choice is yours.

Our PVC-U window systems offer the very best in stylish good looks, coupled with low maintenance and energy efficient features as standard.

Over the next few pages you will see the range of VEKA window styles on offer and find that there really is a window to bring out the very best in your home.





Casement

Unlimited options for personalisation

Definition: A Casement window is one where all or part of a window opens outwards – this opening area is known as the sash. There are several variations of Casement window.

Our casement windows are available in a choice of the bevelled, angular Matrix 70 system or the Fully Sculptured system which has a softer, more rounded appearance – the choice is yours.

Plus, personalise your home further with the wide range of colour options on offer.

See page 22 for details.



Top Light

Hinges run across the top of the sash and a small area at the top opens outwards - this is known as a Top Light.



Side Hung

If the window hinges run vertically down the side so the full sash opens from one side this is known as a Side Hung.



Top Hung

Similar to a Top Light but with the entire sash opening outwards - this is known as a Top Hung.



Did you know that Casement windows are the most popular style in the UK, with the majority of home owners choosing this versatile option



Ask your installer to recommend what type of casement window would best complement your home.



Vertical Slider

Elegant traditional style

Definition: A Vertical Slider or Sash Window features 2 sashes which slide past each other and also tilt inwards for ventilation. This style was originally found in properties dating from the Georgian period, right through to the 1920s.

Our Vertical Slider system combines classic style with modern benefits. Vertical Sliders perfectly complement period properties, but beneath the surface they have been brought bang-up-to-date with the kind of advanced technology VEKA is known for worldwide.



Sash horns can be added to this popular window style for a more traditional appearance and are available in either clip in or run-through options, your installer will be able to help you choose what will best complement your property.

Don't forget that whilst Vertical Sliders are commonly associated with period properties, they also look great on newer homes – adding a touch of class and allowing your individuality to shine through.





Tilt and Turn

Good looks and secure ventilation

The way a window is designed to open is a part of its character as well as its function

Definition: A Tilt & Turn window is a sash which opens inwards in 2 ways – the whole of the window opens inwards for easy cleaning or choose to tilt the window inwards from the top to allow for secure ventilation.



This style of window is extremely popular, particularly in Scotland, and offers a combination of good looks, coupled with the practical benefits of ventilation and the ability to clean the exterior glass from indoors – especially good for use in apartments or where access to upstairs windows for cleaning is limited.

Our Tilt & Turn windows are available in a choice of bevelled or sculptured systems and a range of foiled colours.



Fully Reversible

Stunning good looks with practicality

Definition: The opening sash on a Fully Reversible Window can be turned completely inside out so that the outside pane of glass is on the inside - without intruding on interior ornaments or blinds.

Our Fully Reversible system is particularly popular in high rise homes and buildings as it offers the opportunity to easily clean the exterior surface of the glass from the comfort of your own home. The Fully Reversible mechanism is simple to use and also allows for varying degrees of ventilation as required.

Remember, whilst this window is all about practicality, it also adds great character.



Beautiful Doors

The gateway to your home

Whether you are looking for a secure new front door from our PVC-U or Composite ranges, elegant French Doors or contemporary bi-folds, we can offer an option to suit you and help you to complement and enhance your property.





PVC-U Doors

Only limited by your imagination

Definition: PVC-U doors are made from panels of PVC-U and areas of glazing which sit in a PVC-U frame. A wide choice of style options and door combinations are possible.

All our PVC-U doors are bespoke and so you can choose a combination of glass, PVC panels and other options to truly create a door that is unique to you.

Of course, beautiful aesthetics are not the only benefit – a VEKA PVC-U door also offers outstanding weather performance benefits to ensure that your home remains snug and warm, whatever the weather.





French Doors

Bring elegance and light to your home

Definition: French Doors are distinguished by doors which fully open outwards – rather like a casement window, hence why you may also know them as casement doors. They are typically found on the rear of a home, linking a dining or family room to the garden.

French Doors bring a sense of light and space to your home by flooding the interior with natural light,

bringing the garden and beyond into your home.

For extra light, additional side panels can be added, either full length or with a dwarf wall to allow a window cill for ornaments etc.

Our French Doors have all the style, weather resistance and security features that you would expect from any product carrying the VEKA brand name.



Patio Doors

Contemporary simplicity at its best

In-line Sliding Patio Doors offer a contemporary way to bridge the gap between your home and garden.

Definition: Patio Doors feature a fixed pane and a large sliding panel which opens to leave half of the total area open. Also known as an In-line Sliding Patio Door.



In-line Sliding Patio Doors allow maximum light into your home and bring a sense of space.

Available in a choice of 2, 3 or 4 pane configurations.



Two pane



Three pane



Four pane

Bi-Fold Doors



The ultimate in contemporary living

Bi-Fold Doors are a contemporary way to transform your home and create stunning, light-filled living areas.



Definition: Bi-Fold Doors fold back towards the wall to completely open up the space in which they are installed.

Bring the outside in with Bi-Fold Doors – blur the lines between where your home ends and your garden begins to create a unique living space that is as versatile as it is beautiful.

Available in a minimum of 3 windows leaves. Bi-Folds can fill the full width of your property or conservatory for a stunning alternative to French or Patio Doors and can be installed so that the doors sit inside or outside the property when folded back.



Composite Doors

the look of nature, the performance of science



Definition: A composite door, as its name suggests, is a door made up from several different materials – a composite material sub frame supported by timber stiffeners and pressure filled with an energy efficient foam, all encased in a surface material of GRP (Glass Reinforced Plastic).

The VEKA Composite Door System offers all the aesthetic benefits of timber, coupled with the security, thermal performance and low maintenance of modern materials. Available in a range of 21 styles, a choice of 5 colours and 2 woodgrain finishes plus a large selection of glass patterns, there is a Composite Door to suit every home.



A Composite Door is ideal for those that wish to invest in the looks, security and thermal efficiency of their home.

Secured by Design



Official Police Security Initiative

In 2010 the VEKA Composite Door System was awarded the coveted Secured by Design Accreditation – a scheme established by the Association of Chief Police Officers in order to acknowledge home improvement products which pass stringent tests and meet the principles of 'designing out crime'. Not only this but the doors are available with a choice of locks and are covered by the Saracen Secure Scheme – a guarantee against forced entry.





With the VEKA Composite Door System, the options for personalisation are endless. Choose from a range of 21 styles, including a bespoke design service on selected styles, over 3000 glazing combinations and a choice of Red, Green, Blue, White, Black, Golden Oak or Rosewood colour options.

Your Composite Door can also be further personalised with a range of chrome or gold hardware, including letterboxes, door knockers and spy holes.



Conservatories

Bring the outdoors in



Definition: A conservatory is a structure comprising at least 75% translucent material in the roof and at least 50% translucent material in the wall area. Conservatory roofs can be glazed with either glass or polycarbonate and the sides can be full height windows or can feature windows set on top of a small wall, known as a dwarf wall.



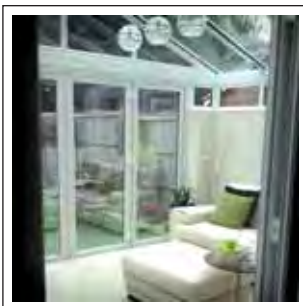
Adding a conservatory to your home not only provides a great sense of light and space – it will also become one of the most versatile living areas of your home, with endless uses – dining room, playroom, office, garden room or even a second lounge.

A wide range of styles are available that need to be carefully considered to ensure that you not only choose a conservatory which complements your home, but also that suits the main purpose you will use it for. For instance, if you want a conservatory with 2 distinct areas consider a P-shape.

Or why not choose a Vertex tiled effect roof for a unique new living space that bridges the gap between a conservatory and a brick extension?

- Available in black, grey or red with white internal finish
- Energy efficient and controls heat - use your conservatory all year round
- Ideal for retrofit
- An excellent alternative to a traditional extension at a fraction of the cost

By choosing a conservatory featuring VEKA windows and doors you can be assured of a secure and stunning addition to your home.



Vertex tiled effect conservatories

Choose from a range of styles to enhance your home

...the choice is yours

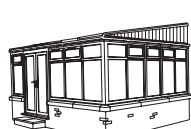
Always seek advice when planning a conservatory or extension as to whether Planning Permission or a Building Warrant may be required.



Victorian



Edwardian



Mediterranean



Gable



Corner fill



P-shape



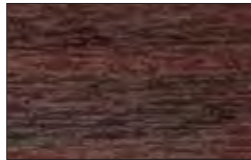
T-Shape

Colours

To match your world...



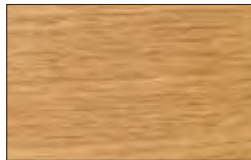
White



Rosewood



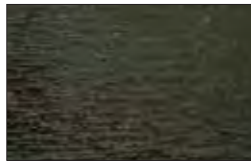
Golden Oak



New Irish Oak



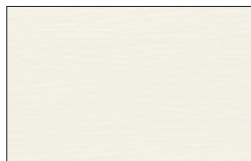
Dark Green



Black



Dark Grey



Ivory

Our range of windows and doors are available in a wide range of woodgrain and coloured foils to ensure that they enhance and complement your home.

Four realistic woodgrains ranging from fresh White and the contemporary Irish Oak, to warm Golden Oak and dramatic Rosewood – there is a woodgrain foil to suit every home.

Or why not choose from our range of colours – forget the thankless task of continual sanding and painting – hard wearing VEKA foiled window systems are available in striking Black and Grey, soft Ivory or the distinguished Dark Green.



Allow your property's personality to shine through with our range of woodgrains and colours.



Add a touch of unique flair to your home.



Secured by Design



Official Police Security Initiative



BS EN ISO9001: 2008
FM 01414



BS EN ISO14001: 2004
EMS 59308



BS EN 12608
KM 12875



PAS 23-1/12608
KM 60983



BS 7950/12608
KM 33520



PAS 24-1/12608
KM 60983

Options

VEKA benefits at a glance

Energy Efficiency

Modern PVC-U windows, doors and conservatories provide an excellent thermal barrier. They will keep out driving winds and rain even in the most exposed locations.

Security

Our windows, doors and conservatories are designed to offer exceptional security. A combination of high tech locking mechanisms, and steel reinforcements ensure that your home is safe and secure.

Recycling

VEKA plc was the first window systems company to offer end of life recycling of PVC-U windows, turning old windows into new ones.



VEKA plc

VEKA plc Farrington Road, Rossendale Road Ind. Est, Burnley, Lancashire, BB11 5DA.

Tel: 01282 716611 Fax: 01282 725257 e-mail: salesenquiry@veka.com

vekauk.com